



Turbo mode

When the air conditioner goes into Turbo mode, it will maximize its cooling or heating capacity, making the room cooler or warmer rapidly.



I FEEL

The remote control can keep track of the temperature at its current location and send the signal to the air conditioner, so it can optimize the room temperature for your maximum comfort.



Anti-fungus

The air conditioner will start the Anti-fungus feature after exiting cooling and dehumidifying mode. It helps prevent fungi and bacteria from spreading in order to maintain a healthy environment.



Horizontal swing

You can use the horizontal swing feature to adjust the airflow direction, if you prefer the air from the AC to blow sideways.

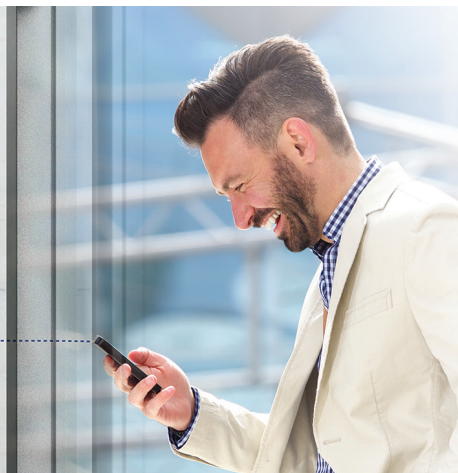


Intelligent defrosting

If the condenser freezes while in heating mode during the times of low outside temperature, the AC will start intelligent defrosting mode.

Wi-Fi

Wi-Fi feature means that Tesla air conditioner can also be controlled with mobile phones or other smart devices: an option that adds to your everyday convenience and comfort!





Features

Anti-Fungus function, Self-Cleaning, Self-diagnosis Function, Top plate/cover improved, Super EMC performance, Anti-Rust Cabinet, Intelligent defrosting, Super Quiet design, Backup Switch, Turbo Operation, Hydrophilic Aluminium Fin, Sleep Mode, Fault Code indication, Low Noise Airflow System, Dual Sides Water Outlet, Multiple Fan Speed, Auto-Restart, Timer, Air blade, Washable Filter, Anti-Cold-Air (Heat Pump Only), WIFI, I FEEL and Lysozyme filter

Capacity			18000BTU	
Rated volt and frequency		V/Hz	220-240V~/50HZ	
Mode			Cooling Heating	
Rated capacity		W	5100(1300-5300) 5400(1300-5500)	
Power input		W	1520(280-1700) 1400(220-1500)	
Current input		A	7.0(1.2-7.5) 6.0(1.4-6.5)	
SEER-SCOP/ Energy Class		W/W	6,6/A++ 4,1A+	
Operating range		(°C)	16~49°C -15~30°C	
Energy consumption (per year, based on standard test results)		kwh	270 1220	
Dehumidifying		Kg/h	1,6	
Degree of protection (IN) / (OUT)		(IP)	IPX0/IPX4	
Class of electric protection (IN) / (OUT)		Class I / Class II	I/I	
Max. input consumption		W	1900	
Max. current		A	9	
Compressor		Model	KSN98D34UER3	
		Type	DC	
		Brand	GMCC	
Indoor	Fan motor	Model	D-310-30-8	
		Power input	W	58
		Capacity	uF	3
		Indoor Fan Speed RPM	r/min	1230/1080/965/850
	Indoor fan	Dia. / Length	mm	φ107.9x661
	Indoor Air Circulation		m³/h	850
	Indoor Noise Level dB		dB(A)	57/50/45/40/36
	Net Dimension (LxWxH)		mm	900x310x225
	Packing Dimension (LxWxH)		mm	950x372x292
	Net Weight/Gross Weight		Kg	11/14
Outdoor	Fan motor	Model	D-35-10A	
		Power input	W	50
		Capacity	uF	/
		Outdoor Fan Speed RPM	r/min	900
	Outdoor fan	Length	mm	407
	Outdoor Noise Level dB		dB(A)	62
	Net Dimension (LxWxH)		mm	715x280x537
	Packing Dimension (LxWxH)		mm	825X326X595
	Net Weight/Gross Weight		Kg	25/29
	Refrigerant type/weight		g	R32/800
Max. Discharge/Max. Suction pressure		Mpa	4.3/2.5	
Refrigerant piping	Liquid side / Gas side		mm	φ6,35/φ12,0
	Max. refrigerant pipe length / Max. difference in level		m	25/15